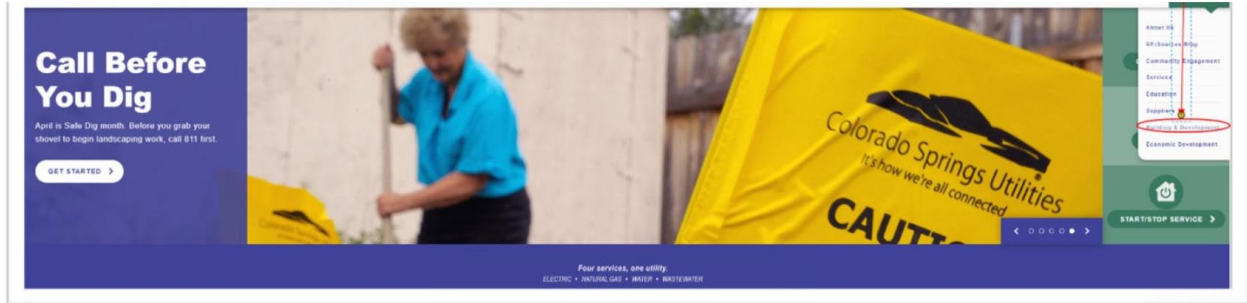
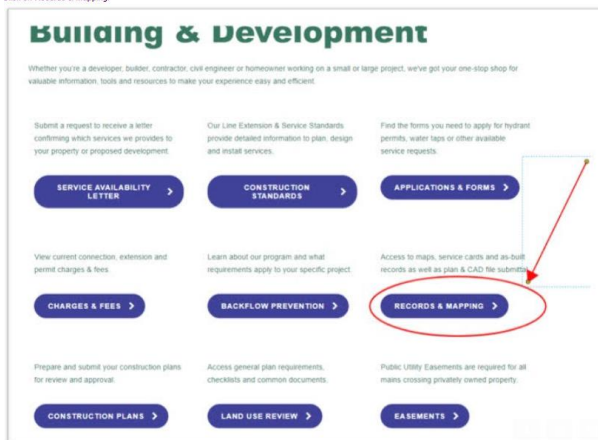


Directions: GIS Mapping Services (CSU)

Go to [CSU.org](https://www.csu.org) and follow the directions below.



Click on Records & Mapping:



Now you are on GIS Mapping Services. There direct link is here: [GIS.Mapping.Services/csu.org](https://www.csu.org/records-mapping)

You can order an as-built drawing of your needs by choosing the Request As-Built Drawing lower left, upper right corner is where you go into the mapping system to view utilities in your area.

GIS Mapping Services

Mapping Public Portal
Request a Map Product

To view map showing utilities in your area

Our geospatial public portal is an interactive web mapping environment with utility data on all four services, including service cards and survey co records. The public portal also enables self-service printing of utility maps.

Construction Projects

On any given day, we have construction crews in the community working to improve the reliability of our systems. With our GIS mapping services customers can learn more details about utility projects in their neighborhoods or of interest to them.

Note: Our online map only displays planned major projects, those lasting 2 weeks or longer. Please use our outage map if you're looking for information about a service outage.

Standard Maps

- All Services Boundary Map >
- Electric Service Boundary Map >
- Natural Gas Service Boundary Map >
- Wastewater Service Boundary Map >
- Water Service Boundary Map >
- 2020/2021 Citywide Planned Projects Map >

Related Links

- Construction Plan Review & Submit >
- Request As-Built Drawing >
- Submit Utility Addressing Plan >
- Submit Utility Design CAD File >

To order as-built drawings

Inside the mapping area under **I want to...** Choose Search for an Address or Intersection:

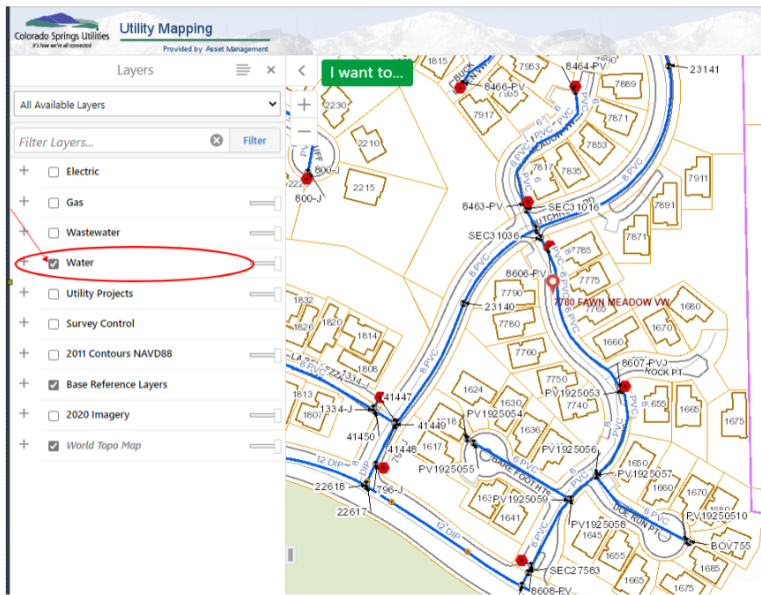
Colorado Springs Utilities
Provided by Asset Management

Utility Mapping

I want to...

- Get Help
Get help with this application.
- View Map Layers
Alter visibility of map layers, perform layer actions, and view the legend.
- Search for an Address or Intersection**
Search for a location by street or intersection
- Print a Map
Multiple options for printing a map
- View Property Information
Service cards, property information, and efficiency rebate eligibility.
- View Utility Projects
View Colorado Springs Utilities construction projects around the City.
- Find Survey Control Point
Find Survey Control Points and Monument Records.
- Return to initial map extent
Return to the initial map position and zoom level.

Turn on the utility you are looking for, then you can use your cursor and touch on the blue line to see information. Or you can touch on the address to go to the service card of that property.



If you need more help with the mapping information, you can contact FIMS mapping team at FIMSMapRequest@csu.org or call 719-668-3524.

As far as the conversion goes you can speak with one of my team members, Stefan Manning. His email is smanning@csu.org or call him at 719-668-1854.